

OPEN SPACE AND RECREATION PLAN UPDATE: CONSERVATION AND STEWARDSHIP

County of Sussex



Technical Report I: Land Preservation

Water Resource Priorities



AUGUST 2016



Prepared for:
Sussex County
Board of Chosen Freeholders
Open Space Advisory Committee

OPEN SPACE AND RECREATION PLAN UPDATE: CONSERVATION AND STEWARDSHIP

**for
COUNTY of SUSSEX**

Technical Report I: Land Preservation

Produced by:
The Land Conservancy of New Jersey
an accredited land trust

Project Consultants:

Kathleen Caccavale

The Land Conservancy of New Jersey

Nathaniel Sajdak

Sussex County Municipal Utilities Authority – Wallkill River Watershed Management Group

Daniel J. Van Abs, Ph.D.

School of Environmental & Biological Sciences, Rutgers, The State University of New Jersey

This Project was supported through the Open Space Institute's Delaware River Watershed Protection Fund which is made possible with a lead grant from the William Penn Foundation. The Delaware River Watershed Protection Program seeks to ensure abundant, clean water within the 13,000 square mile drainage of the Delaware River.

For further information please contact:



19 BOONTON AVENUE
BOONTON, NJ 07005
PH: (973)541-1010
FAX: (973)541-1131
TLC-NJ.ORG



County of Sussex

Sussex County Division of Planning
One Spring Street
Newton, NJ 07860
Ph: (973) 579-0500
Fax: (973) 579-0513
sussex.nj.us

WATER RESOURCE MODELING

Accompanying the *Sussex County Open Space and Recreation Plan Update* are three *Technical Reports* which include the results of the detailed ArcGIS mapping analysis run to model water resources and prioritize land for preservation and stewardship. These reports are as follows:

- ✓ Technical Report I – Land Preservation (*Maps 1-13*)
- ✓ Technical Report II – Land Stewardship (*Maps A-I*)
- ✓ Technical Report III – Analysis and Recommendations (*Maps I-IV*)

Each report contains a table detailing the metrics, data, and mapping for the water resource areas studied in Sussex County. The final report includes a table detailing the priority lands for preservation, as identified by the water resource model in Sussex County. These are identified on a parcel basis and are ranked by their proximity to already preserved lands. This table, along with the accompanying mapping, provides the tools by which the County Open Space Committee, Board of Chosen Freeholders, and local officials can target their efforts to protect lands in Sussex County – focusing on those properties that support the water resources integral to the County and expand existing public open spaces.

Technical Report I - Land Preservation

The following 13 maps illustrate characteristics used to identify targets for protection of the water resources in Sussex County. Each map targets a defining characteristic important to water quality and/or quantity. These are defined in greater detail on the accompanying table and in the Plan Update.

Maps 1-5 identify the hydrologic characteristics within the Sussex County.

Maps 6-9 and Map 3 identify characteristics protecting stream and aquifer quality.

Maps 10-13 identify the characteristics of aquatic ecosystem functions in Sussex County.

Map 1 identifies the areas of ground water recharge areas within stressed watersheds, which make up 3% of the county.

Map 2 illustrates prime recharge areas that provide flows to surface waters and wells. These account for 31.26% of the county.

Map 3 identifies forest cover (including wooded wetlands) which makes up 63.29% of the county.

Map 4 shows where Sussex County's wetlands are located and that they make up 13.6% of the total acres of the county.

Map 5 identifies flood hazards or floodprone areas, which make up 14.6% of the county.

Map 6 identifies riparian areas throughout the county which make up 25.86% of the total acreage.

Map 7 identifies soluble carbonate rocks, to illustrate areas that are at a higher risk of water contamination. These areas make up 24.03% of the county.

Map 8 shows where public community water supply wells are located, as well as time buffer zones for 2, 5, and 12 year travel to the well. These zones make up 2.95%, 3.46%, and 6.17% of Sussex County respectively, with a total of 12.57%.

Map 9 identifies source water areas targeting land where water flows into the public water supply. These areas make up 6.11% of the county's total acreage.

Map 10 identifies undeveloped riparian areas of headwater streams in Sussex County, totaling 17.84%.

Map 11 identifies the unique and unusual aquatic habitats. The different categories are; potential vernal habitat, vernal habitat, high elevation water bodies, and those high elevation water bodies with a 300 foot buffer. Each makes up 11.88%, 7.03%, 0.77%, and 2.18% of the county respectively.

Map 12 shows the aquatic habitats for threatened and endangered species, which is 1.03% of the county.

Map 13 shows wetlands habitat for threatened and endangered species, which is 12.99% of the county.

Table 1 includes the acreages for each of the water resource characteristics described and shown on *Maps 1 – 13*.

Table 1. Water Resources in Sussex County (Acreages)

Map	Acres	Percent of County
Map 1: Stressed Watersheds: Current Utilization		
Significant Recharge Areas (70% Threshold)	10,301.62	3.00%
Stressed Watershed (based on 25% of Low Flow Margin)	24,116.24	7.03%
Map 2: Prime Recharge Areas	107,236.07	31.26%
Map 3: Forest Cover (Include Wooded Wetlands)	217,112.44	63.29%
Map 4: Wetlands	46,644.01	13.60%
Map 5: Flood Hazards & Floodprone Areas	50,094.28	14.60%
Map 6: Riparian Areas	88,697.73	25.86%
Map 7: Soluble Carbonate Rocks	82,421.35	24.03%
Map 8: Public Wellhead Protection Areas		
2 Year Time of Travel	10,110.31	2.95%
5 Year Time of Travel	11,854.09	3.46%
12 Year Time of Travel	21,159.70	6.17%
Total	43,124.10	12.57%
Map 9: Source Water Areas	20,961.38	6.11%
Map 10: Headwaters and Riparian Areas		
Headwaters	61,203.65	17.84%
Riparian Areas (Total)	88,697.73	25.86%
Map 11: Unique & Unusual Aquatic Habitats		
Potential Vernal Habitat	40,763.71	11.88%
Vernal Habitat	24,128.51	7.03%
High Elevation Water Bodies	2,628.56	0.77%
High Elevation Water Bodies (include 300 feet buffer)	7,493.29	2.18%
Map 12: Aquatic Habitats for Threatened & Endangered Species	3,531.91	1.03%
Map 13: Wetland Habitat for Threatened & Endangered Species	44,555.02	12.99%

Water Priorities for Land Preservation in Sussex County

The Sussex County Open Space Plan includes a set of maps that provide information about important water-related characteristics. The following table provides the three “focus” areas, measurable characteristics, purpose, metrics and data. Each “focus” has an equal weight, and each “characteristic” within the focus area has an equal weight.

Within each Focus Area – the individual characteristics are given an equal weight. The map for each polygon reflects areas that may have a weight of 1, 2, 3, 4, or 5. The overall map may be a combination of the three focus maps, with scores of 1 to 15, or a gradation of scores to allow for more flexibility in how the information is used. The user will be able to use the maps individually, or together – depending on the purpose. The scores are based on polygons and not on individual properties. Properties can be evaluated on a weighted-average basis or other method.

weight	Characteristics	Purpose	Metrics and Data	Map
Focus Area 1. Protecting the Resources – Hydrology				
1	Identify hydrologically stressed watersheds	Place higher priority on protection of recharge areas in HUC11s with highest water demands.	Stressed watersheds, using 25% of Low Flow Margin setting in DGS14-1 Computer Workbook Investigating Water Availability in New Jersey on a Watershed Management Area Basis HUC 11 (watershed) basis – based on surface water (other than reservoir-supported) and groundwater withdrawal Recharge areas only (provide 70% of the recharge) in those watersheds that are using 85% of their allocation	Map 1. Stressed Watersheds: Current Utilization Greater than 85% of Available Water
1	Preserve Prime Recharge Areas	Recharge provides flows to surface waters <u>and</u> to wells. Critical to flow of trout streams.	Define “prime” as the best recharge areas comprising 40% of drought flow: Baseline measurement was the 1960s drought of record Recharge Areas (NJGS Method GSR32) and DGS02-3 Ground-Water Recharge for New Jersey Using the groundwater recharge mapping and HUC 14 (subwatershed) delineations, PGWRA are the lands with the highest recharge rates that in aggregate provide 40% of the total HUC14 recharge	Map 2. Prime Recharge Areas
1	Preserve Forest Area	Forest cover results in less runoff, more even stream flows, higher water quality	Total forest cover (focus is on hydrology, core forest is less of an issue here than under ecosystem protection) – includes forested wetlands NJDEP 2012 LULC	Map 3. Forest Cover

weight	Characteristics	Purpose	Metrics and Data	Map
1	Preserve Wetlands	Removing potential for loss of hydrologic function due to nearby development; resolve land use conflicts	Presence/absence of wetlands – includes forested wetlands NJDEP 2012 LULC – Anderson Classes 2140, 2150, 6200 series	Map 4. Wetlands
1	Preserve Floodplains	Removing potential for loss of hydrologic function due to floodplain modification; resolve land use conflicts	Presence/absence of floodplains <ul style="list-style-type: none"> • 2011 DFIRM (Final) – FEMA 1% (100 year) flood plain • NJDEP Floodprone Mapping from 1996 LULC (USGS derivation) 	Map 5. Flood Hazard and Floodprone Areas
Focus Area 2. Protecting the Resources – Stream and Aquifer Quality				
1	Maintain Forest Area	Forest cover results in higher water quality.	Total forest cover (the focus here is on water quality, and so core forest is less of an issue here than under ecosystem protection)	Map 3. Forest Cover
1	Maintain Riparian Areas	Critical habitat types for shading of streams (important for trout production streams), filtering of sediment	Riparian Area evaluation (using a method similar to Raritan Basin Watershed Management Plan, or TNC Active River Area approach), predevelopment (approximate) and 2012: <ul style="list-style-type: none"> • <i>Water bodies (NJDEP 2012)</i> • <i>If associated with a water body:</i> <ul style="list-style-type: none"> <i>Floodprone Areas (NJDEP 1996) and FEMA DFIRM 1% (100 year) flood plain</i> <i>Riparian Soils (hydric or alluvial, and less than 18 inch seasonal depth to high water table – NRCS SSURGO 2014)</i> <i>Wetlands (NJDEP LULC 2012)</i> <i>Wetlands Transition Areas (Freshwater Wetlands Protection Act rules, stream classifications, T&E species)</i> <i>Stream buffers – wildlife passage corridors, 300 feet on either side of streams that are 3rd order or greater, 150 feet on either side for 1st or 2nd order streams</i> • <i>Remove isolated wetlands, floodprone areas, and water bodies (including vernal pools)</i> • <i>Remove developed lands per 2012 LULC Anderson codes</i> 	Map 6. Riparian Areas

weight	Characteristics	Purpose	Metrics and Data	Map
1	Karst Topography	Areas with active dissolution of limestone bedrock are at higher risk of contamination	<ul style="list-style-type: none"> • Limestone bedrock outcrops – surficial bedrock geology for limestone and dolomite • (Note: Karst topography identification not available per NJGS) 	Map 7.Soluble Carbonate Rocks
1	Preserve Wellhead Protection Areas	Wellhead protection areas provide the bulk of water to wells within a 12-year time period.	<ul style="list-style-type: none"> • NJDEP 2011 • Tier 1 (2-year), 2 (5-year) and 3 (12-year) time of travel • Note: Andover wells are on map, Branchville wells not completed • DGS02-2 Well Head Protection Areas for Public Community Water Supply Wells in New Jersey • DGS04-5 Well Head Protection Areas For Public Non-Community Water Supply Wells In New Jersey. Not included on the map, GIS does not exist 	Map 8. Public Wellhead Protection Areas
1	Surface Water Reservoir Protection	Protecting lands that flow to the public water supply	<p>Morris Lake (Sparta), Lake Rutherford /Colesville Reservoir (in Wantage), Pequannock River Watershed (City of Newark), Rockaway River Watershed (Jersey City), Lake Hopatcong is a major recreational area, and an emergency water supply source</p> <ul style="list-style-type: none"> • <i>Included Lake Shawnee and Lake Winona within Lake Hopatcong watershed</i> • <i>Lake Rutherford/Colesville Reservoir: Source Water Assessment Report for Sussex Borough – Lake Rutherford is the storage location and drains into Colesville Reservoir where it is held</i> (www.nj.gov/cgi-bin/dep/swap/swapdata2.pl?psid=1921001) <i>Reservoir drainage areas (Rutgers CRSSA) data</i> 	Map 9. Source Water Areas

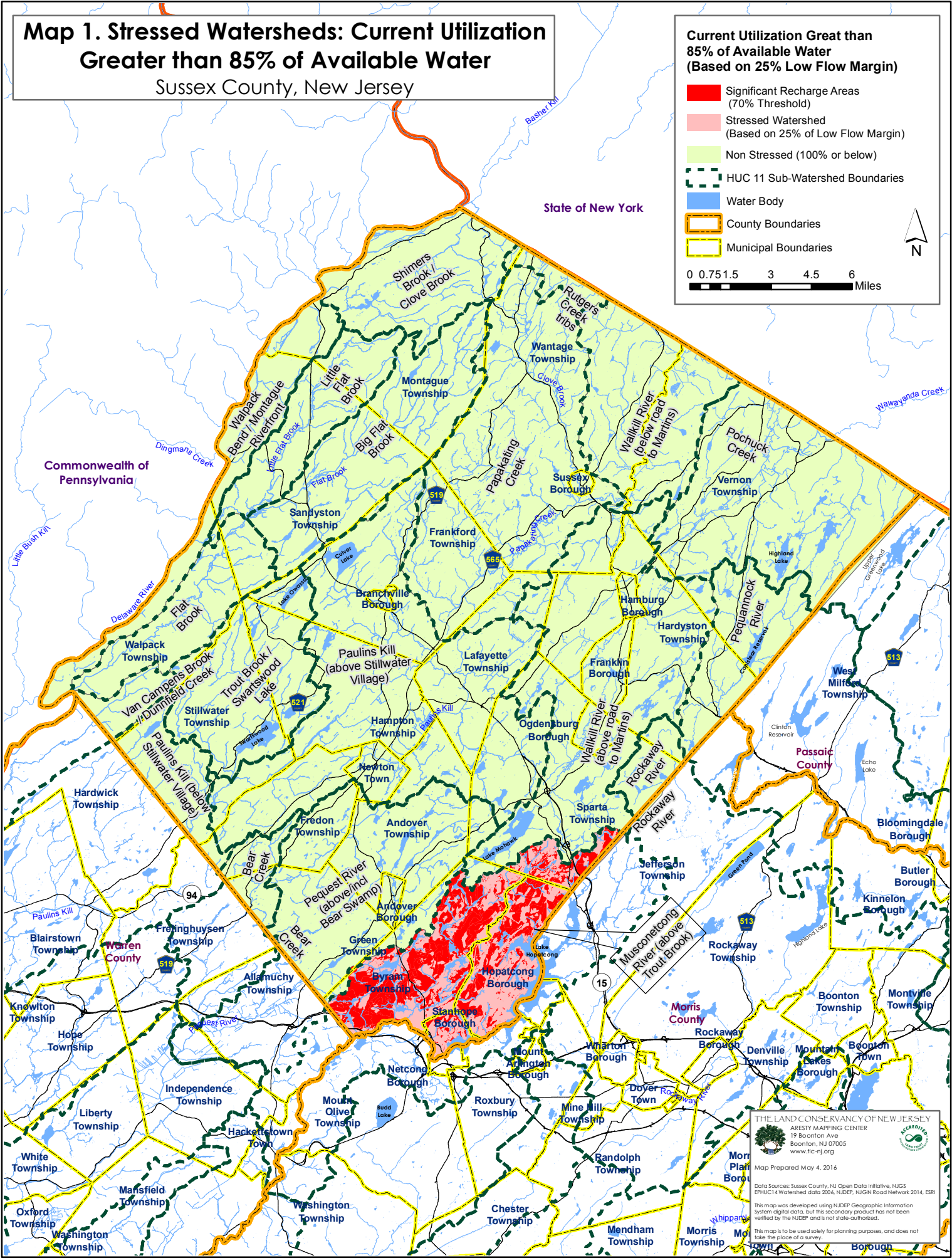
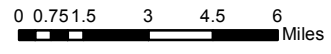
weight	Characteristics	Purpose	Metrics and Data	Map
Focus Area 3. Protecting Aquatic Ecosystem Functions.				
1.25	Protect Headwaters to Streams	First and Second Order streams. Protects downstream flows, quality, ecosystems. Highly vulnerable.	1 st and 2 nd Order Streams: Riparian Areas associated with 1 st /2 nd order streams, selecting those that are not developed <ul style="list-style-type: none"> • Headwaters stream identification NJDEP stream hydrography. • Headwaters riparian delineations using the method in #2. Identification of undeveloped, non-preserved headwaters riparian areas	Map 10. Headwaters and Riparian Areas
1.25	Preserve Unique and Unusual Aquatic Habitats	<ul style="list-style-type: none"> • Calcareous (limestone) fens (unusually high pH) • Sinkhole ponds • Mountain lakes • Vernal pools 	<ul style="list-style-type: none"> • 2003 Sussex OSRP – data cannot be confirmed, will not be mapped • 2003 Sussex OSRP – data cannot be confirmed, will not be mapped • NJDEP LULC for lakes at higher altitudes (above 1,000 feet) NJDEP vernal pool mapping (2012 Landscape Project 3.1)	Map 11. Unique and Unusual Aquatic Habitats
1.25	Maintain Riparian Areas	<ul style="list-style-type: none"> • Riparian areas are critical for providing food sources to aquatic habitats, quality protection and shading. 	<ul style="list-style-type: none"> • Riparian Area evaluation as above. • Landscape Project mapping of habitat for T&E species that are closely associated with open waters (Information provided by TNC for T&E) 	Map 12. Aquatic Habitats for Threatened and Endangered Species
1.25	Preserve Wetlands	<ul style="list-style-type: none"> • Wetlands themselves are important aquatic and transitional ecosystems, including T&E species. 	<ul style="list-style-type: none"> • Wetlands identification as above • Landscape Project mapping of habitat for T&E species that are closely associated with wetlands and forested wetlands 	Map 13. Wetlands Habitat for Threatened and Endangered Species

Map 1. Stressed Watersheds: Current Utilization Greater than 85% of Available Water

Sussex County, New Jersey

Current Utilization Great than 85% of Available Water (Based on 25% Low Flow Margin)

- Significant Recharge Areas (70% Threshold)
- Stressed Watershed (Based on 25% of Low Flow Margin)
- Non Stressed (100% or below)
- HUC 11 Sub-Watershed Boundaries
- Water Body
- County Boundaries
- Municipal Boundaries



THE LAND CONSERVANCY OF NEW JERSEY
 ARESTY MAPPING CENTER
 19 Boonton Ave
 Boonton, NJ 07005
 www.lc-nj.org
 Map Prepared May 4, 2016


Data Sources: Sussex County, NJ Open Data Initiative, NJGS EPHUC 14 Watershed data 2006, NJDEP, NJGN Road Network 2014, ESRI

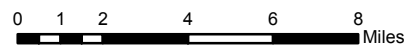
This map was developed using NJDEP Geographic Information System digital data. This secondary product has not been verified by the NJDEP and is not state-authored.

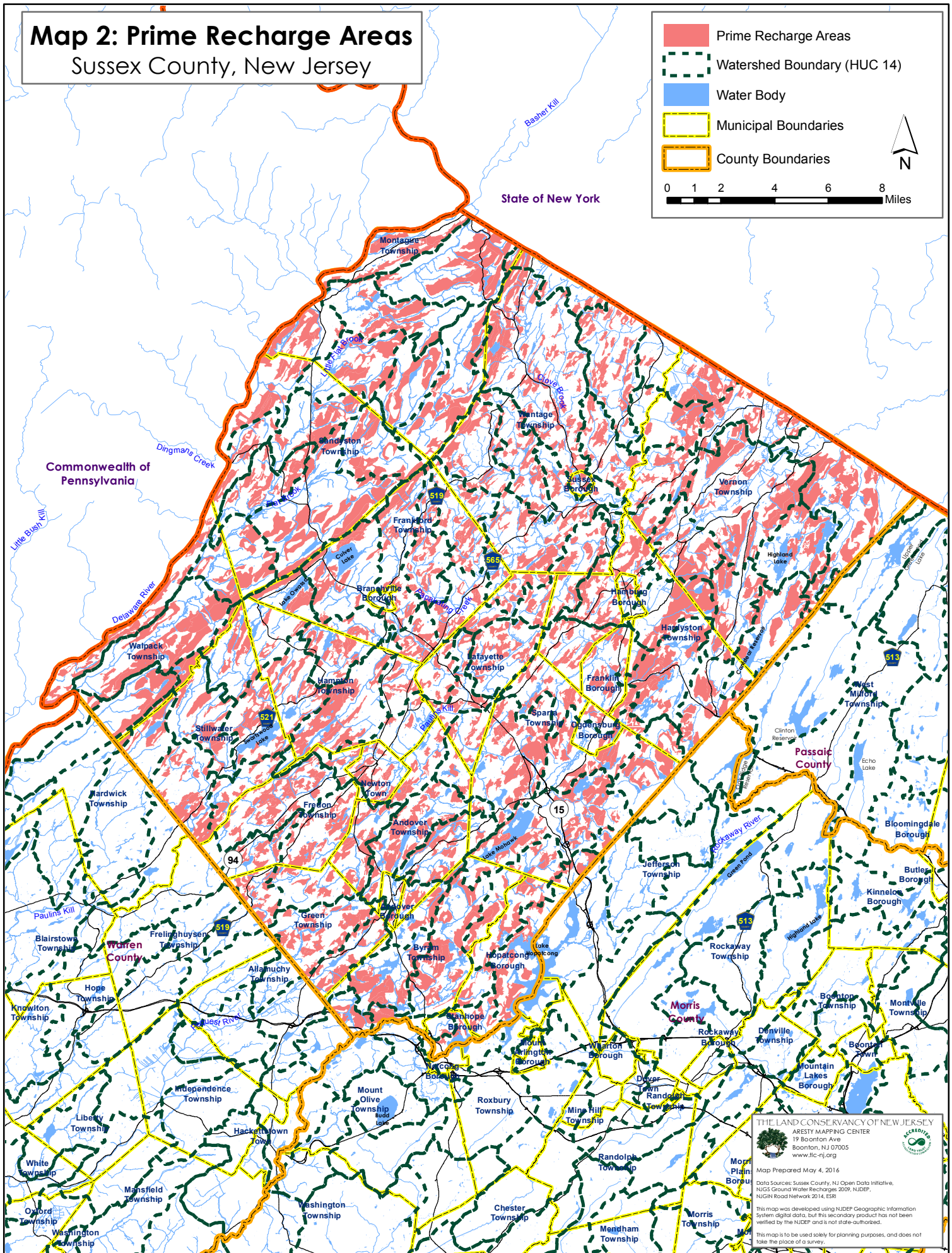
This map is to be used solely for planning purposes, and does not take the place of a survey.

Map 2: Prime Recharge Areas Sussex County, New Jersey

- Prime Recharge Areas
- Watershed Boundary (HUC 14)
- Water Body
- Municipal Boundaries
- County Boundaries







THE LAND CONSERVANCY OF NEW JERSEY
 ARESTY MAPPING CENTER
 19 Boonton Ave
 Boonton, NJ 07005
 www.lc-nj.org

Map Prepared May 4, 2016


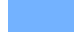


Data Sources: Sussex County, NJ Open Data Initiative, NUGS Ground Water Recharges 2009, NJDEP, NUGIN Road Network 2014, ESRI

This map was developed using NJDEP Geographic Information System digital data, but this secondary product has not been verified by the NJDEP and is not state-authored.

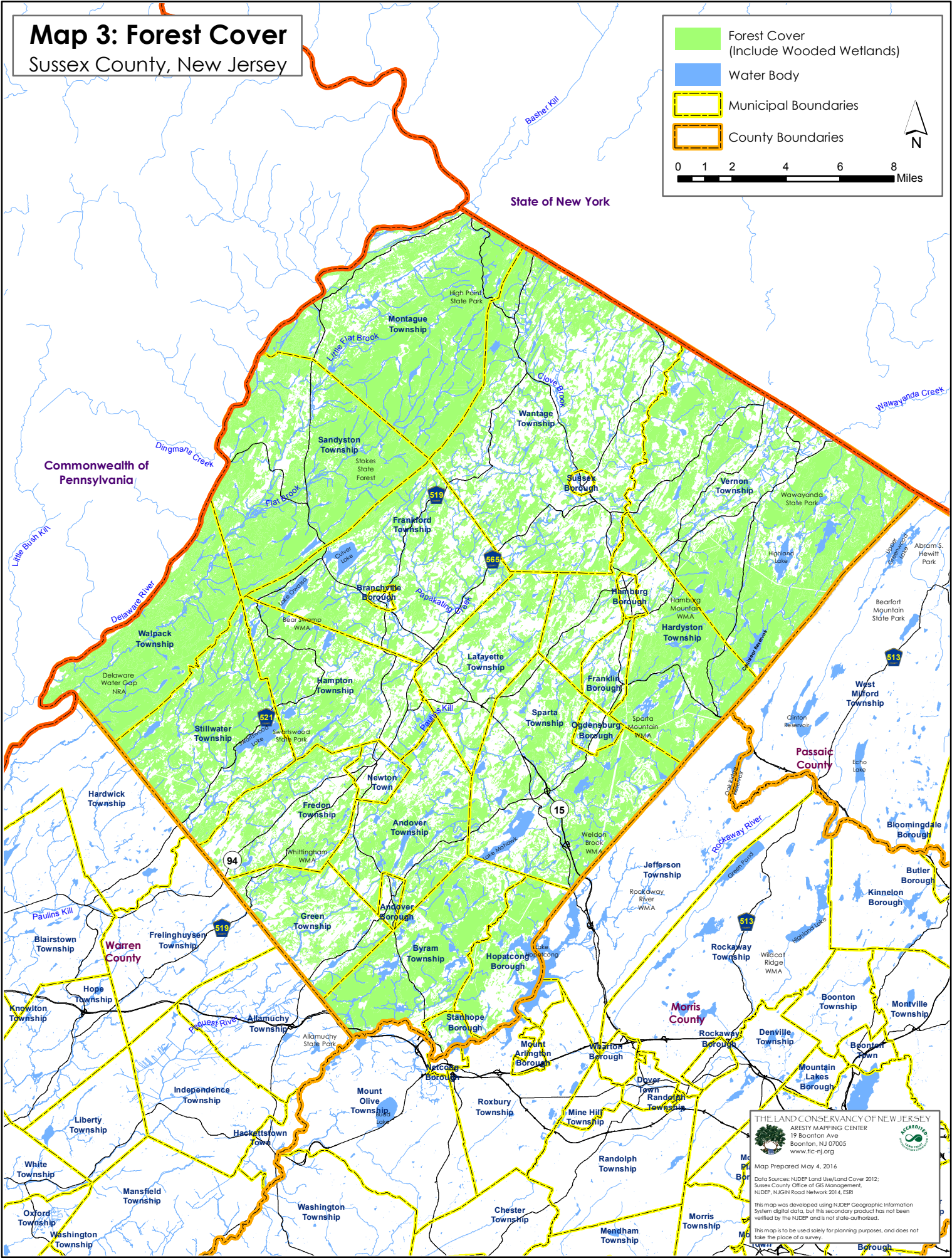

This map is to be used solely for planning purposes, and does not take the place of a survey.

Map 3: Forest Cover

Sussex County, New Jersey

-  Forest Cover (Include Wooded Wetlands)
-  Water Body
-  Municipal Boundaries
-  County Boundaries

0 1 2 4 6 8 Miles



THE LAND CONSERVANCY OF NEW JERSEY
ARISTY MAPPING CENTER
19 Boonton Ave
Boonton, NJ 07005
www.lc-nj.org

Map Prepared May 4, 2016

Data Sources: NJDEP Land Use/Land Cover 2012;
Sussex County Office of GIS Management,
NJDEP, NJGN Road Network 2014, ESRI

This map was developed using NJDEP Geographic Information System digital data, but this secondary product has not been verified by the NJDEP and is not state-authorized.

This map is to be used solely for planning purposes, and does not take the place of a survey.

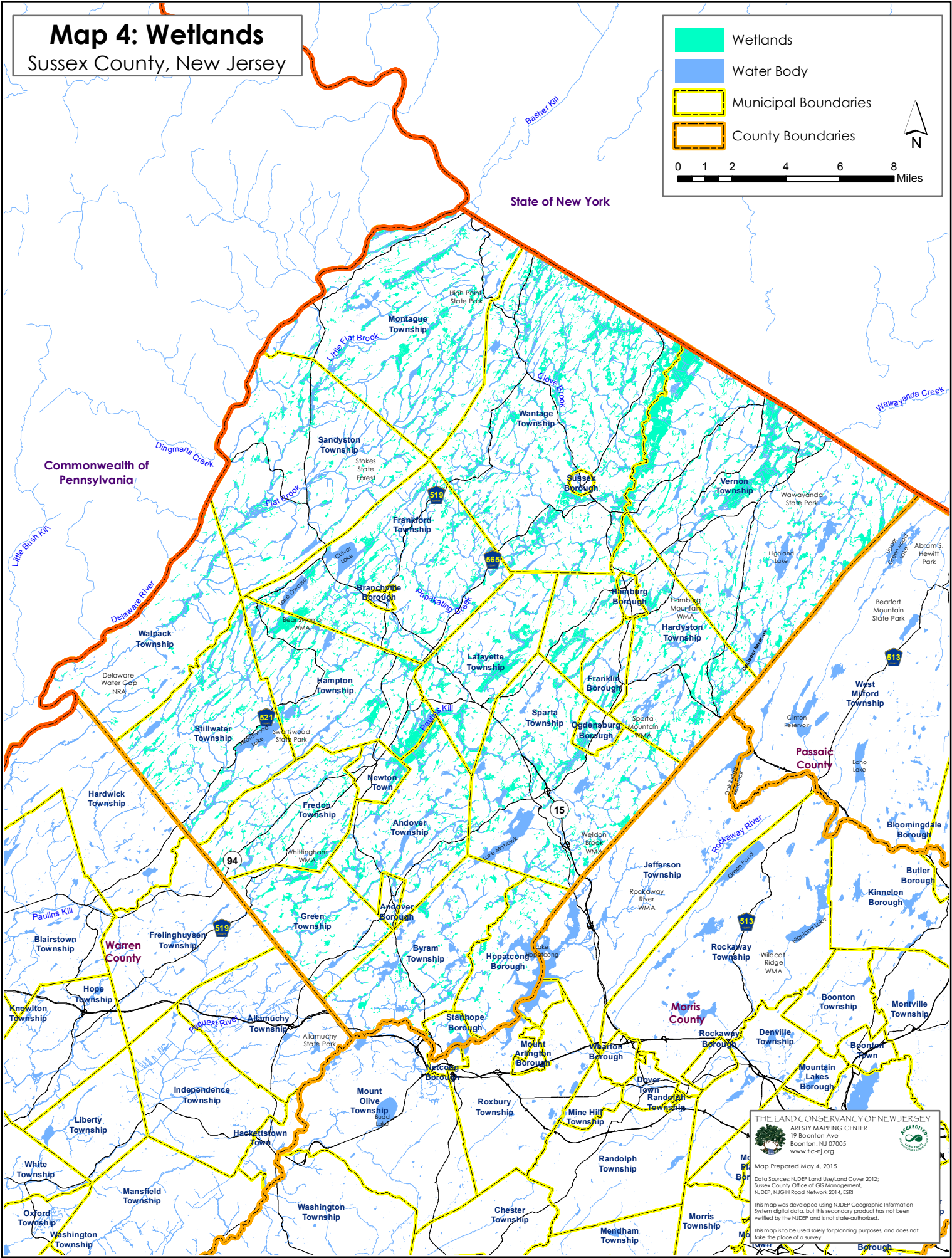
Map 4: Wetlands

Sussex County, New Jersey

Wetlands
 Water Body
 Municipal Boundaries
 County Boundaries

0 1 2 4 6 8 Miles

N



THE LAND CONSERVANCY OF NEW JERSEY
 ARESTY MAPPING CENTER
 19 Boonton Ave
 Boonton, NJ 07005
 www.lc-nj.org

Map Prepared May 4, 2015
 Data Sources: NJDEP Land Use/Land Cover 2012;
 Sussex County Office of GIS Management,
 NJDEP, NJGN Road Network 2014, ESRI

This map was developed using NJDEP Geographic Information System digital data, but this secondary product has not been verified by the NJDEP and is not state-authorized.
 This map is to be used solely for planning purposes, and does not take the place of a survey.

Map 5: Flood Hazards and Floodprone Areas


Sussex County, New Jersey

Flood Hazards and Floodprone Areas (FEMA DFIRM 100 year Flood Hazard & USGS identified Floodprone areas)

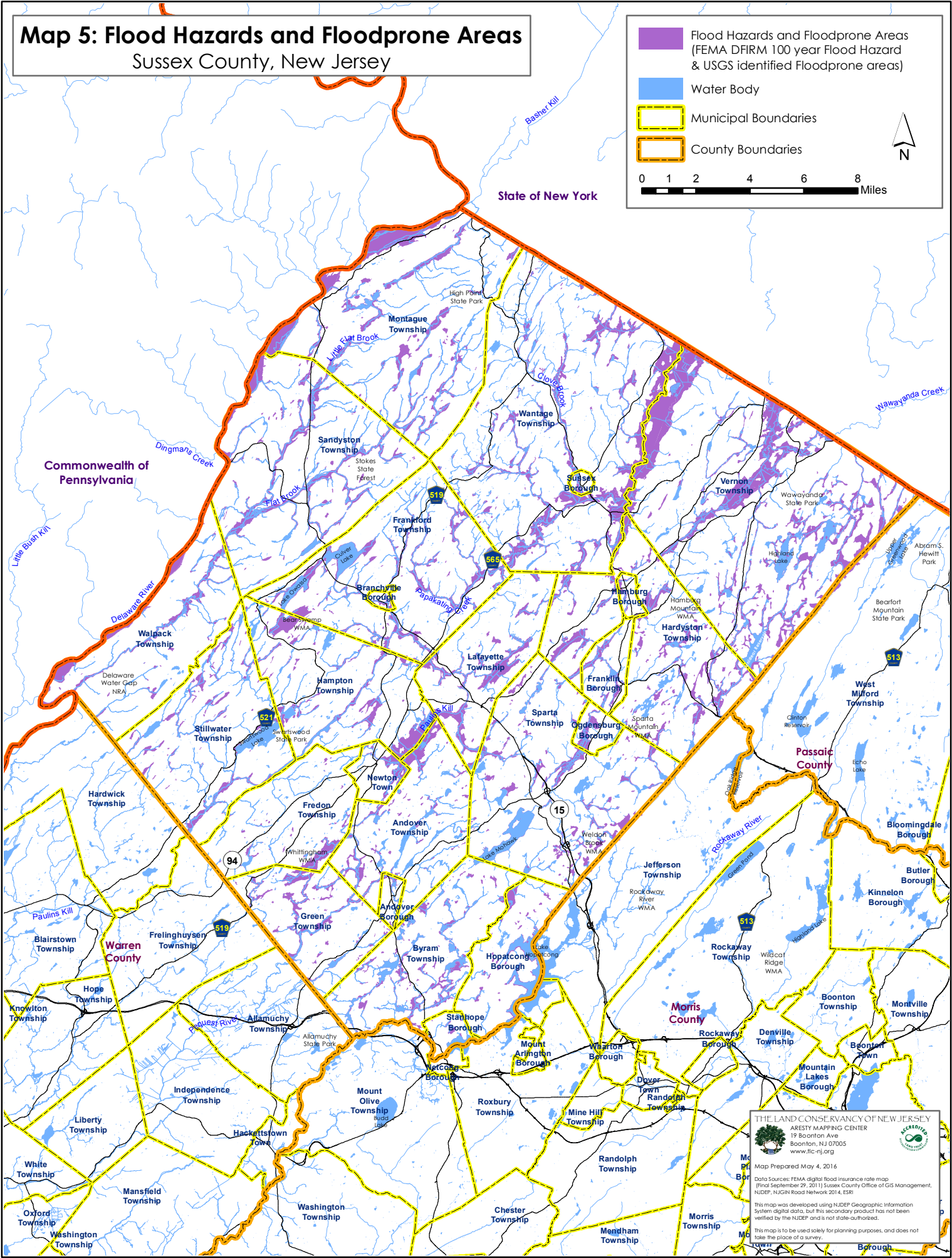
Water Body

Municipal Boundaries

County Boundaries


 N

0 1 2 4 6 8 Miles



THE LAND CONSERVANCY OF NEW JERSEY
 ARESTY MAPPING CENTER
 19 Boonton Ave
 Boonton, NJ 07005
 www.lc-nj.org

Map Prepared May 4, 2016

Data Sources: FEMA digital flood insurance rate map (Final September 29, 2011) Sussex County Office of GIS Management, NIDEF, NJGIN Road Network 2014, ESRI

This map was developed using NIDEF Geographic Information System digital data, but this secondary product has not been verified by the NIDEF and is not state-authorized.

This map is to be used solely for planning purposes, and does not take the place of a survey.

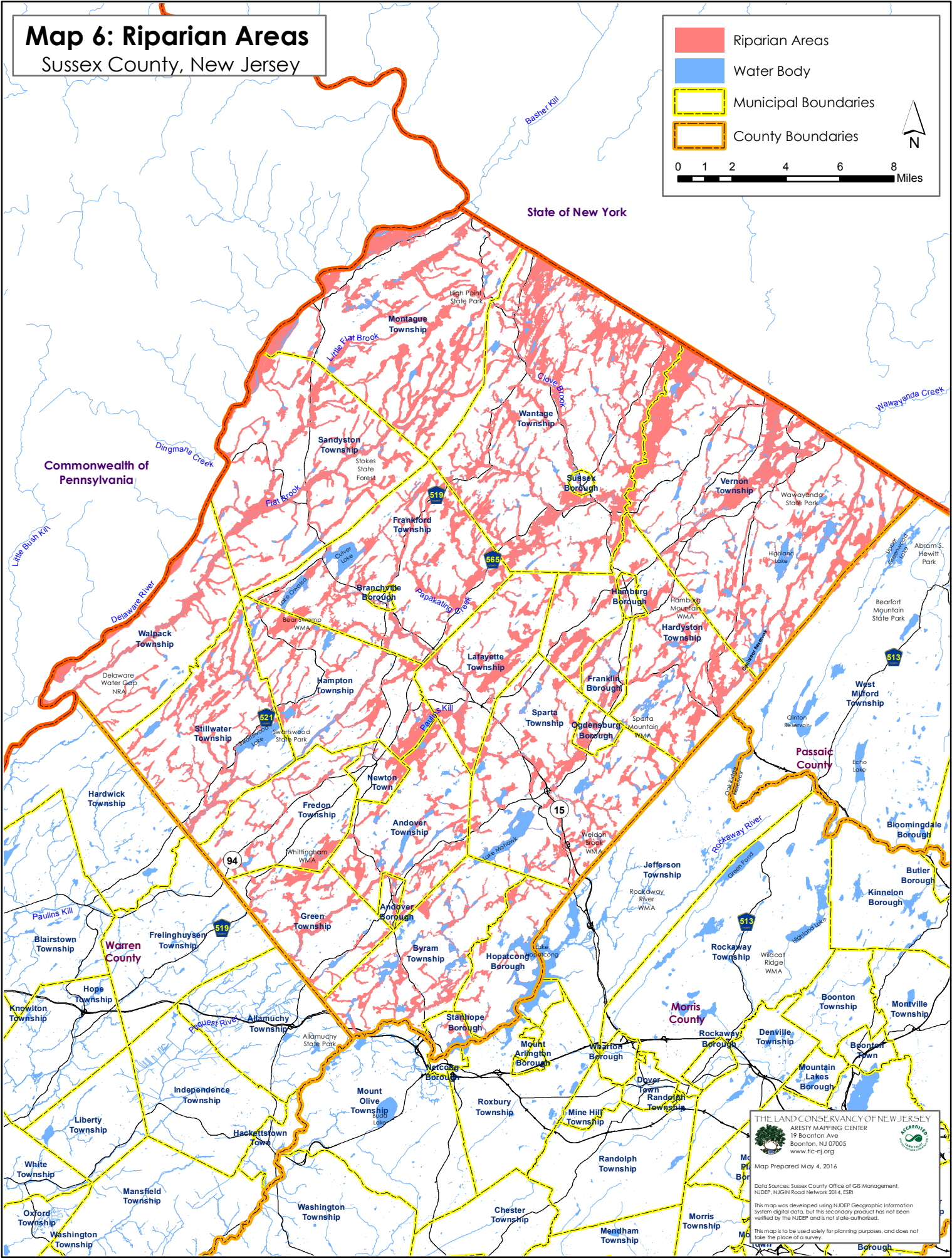
Map 6: Riparian Areas

Sussex County, New Jersey

Riparian Areas
 Water Body
 Municipal Boundaries
 County Boundaries

0 1 2 4 6 8 Miles

N



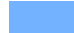

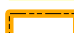


THE LAND CONSERVANCY OF NEW JERSEY
 ARESTY MAPPING CENTER
 19 Boonton Ave
 Boonton, NJ 07005
 www.lc-nj.org
 Map Prepared May 4, 2016


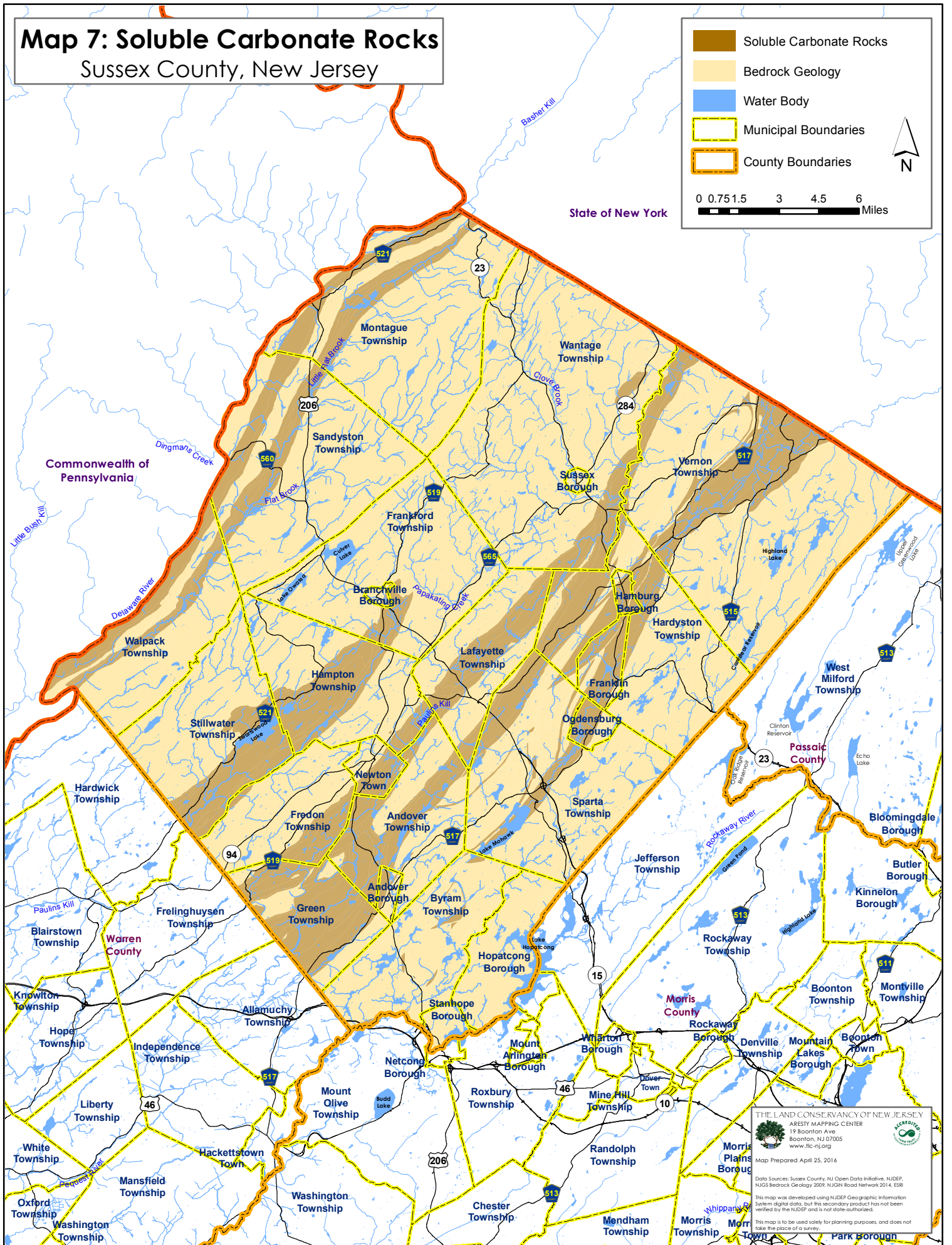
Data Sources: Sussex County Office of GIS Management, NJDEP, NJGRI Road Network 2014, ESRI
 This map was developed using NJDEP Geographic Information System digital data, but this secondary product has not been verified by the NJDEP and is not state authorized.
 This map is to be used solely for planning purposes, and does not take the place of a survey.

Map 7: Soluble Carbonate Rocks

Sussex County, New Jersey

-  Soluble Carbonate Rocks
-  Bedrock Geology
-  Water Body
-  Municipal Boundaries
-  County Boundaries

0 0.75 1.5 3 4.5 6 Miles

THE LAND CONSERVANCY OF NEW JERSEY
 AERISTY MAPPING CENTER
 19 Boonton Ave
 Boonton, NJ 07005
 www.lc-nj.org
 Map Prepared April 25, 2016





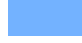


Data Sources: Sussex County, NJ Open Data Initiative; NJDEP, NJGS Bedrock Geology 2009; NJGIS Road Network 2014; ERI

This map was developed using NJDEP Geographic Information System digital data, but this secondary product has not been verified by the NJDEP and is not state-authored.


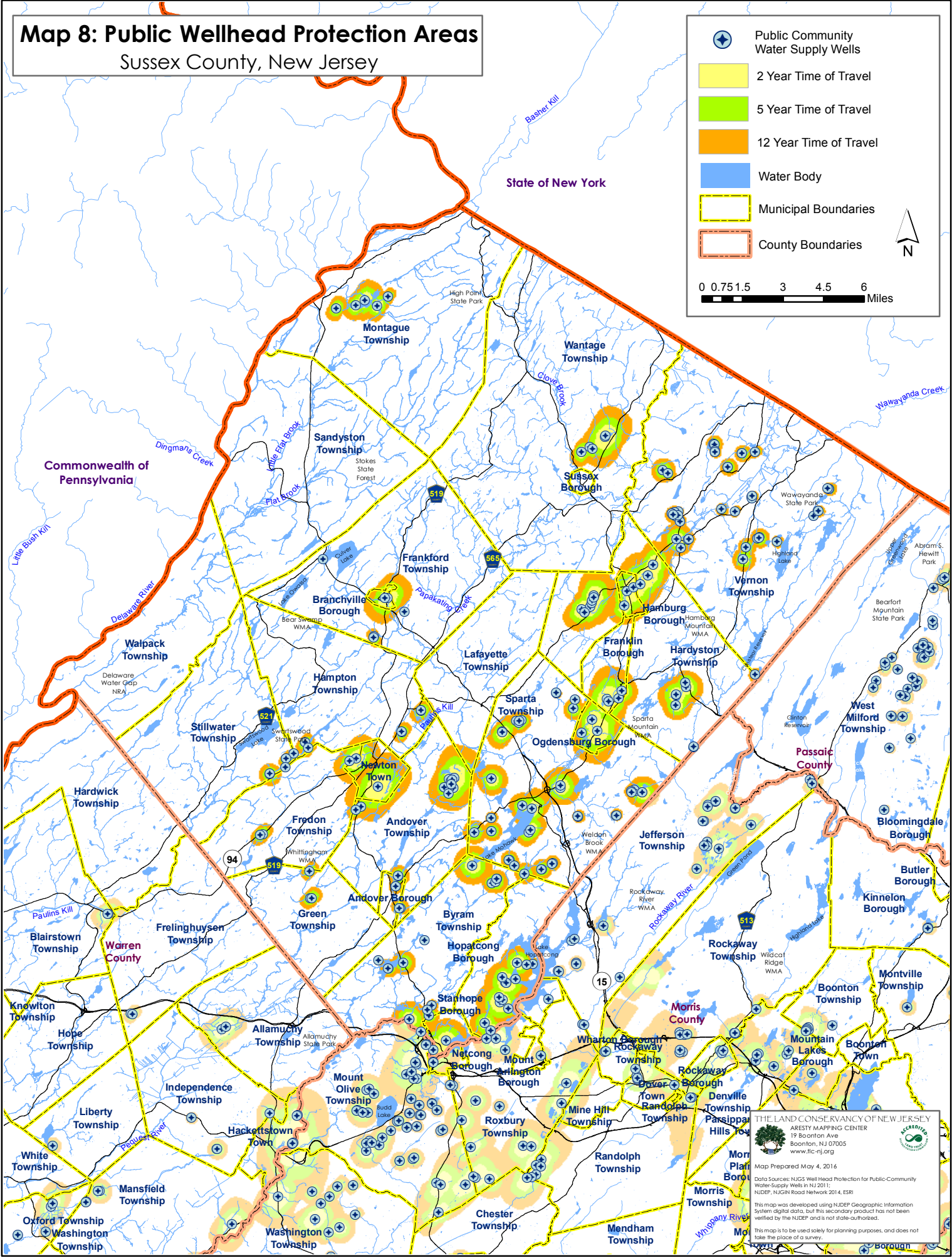
This map is to be used solely for planning purposes, and does not take the place of a survey.

Map 8: Public Wellhead Protection Areas

Sussex County, New Jersey

-  Public Community Water Supply Wells
-  2 Year Time of Travel
-  5 Year Time of Travel
-  12 Year Time of Travel
-  Water Body
-  Municipal Boundaries
-  County Boundaries

0 0.75 1.5 3 4.5 6 Miles

THE LAND CONSERVANCY OF NEW JERSEY
 AESTHY MAPPING CENTER
 19 Boonton Ave
 Boonton, NJ 07005
 www.lc-nj.org

Map Prepared May 4, 2016

Data Sources: NJGS Well Head Protection for Public-Community Water-Supply Wells in NJ 2011;
 NJDEP, NJGRI Road Network 2014, ESRI

This map was developed using NJDEP Geographic Information System digital data, but this secondary product has not been verified by the NJDEP and is not state-authorized.

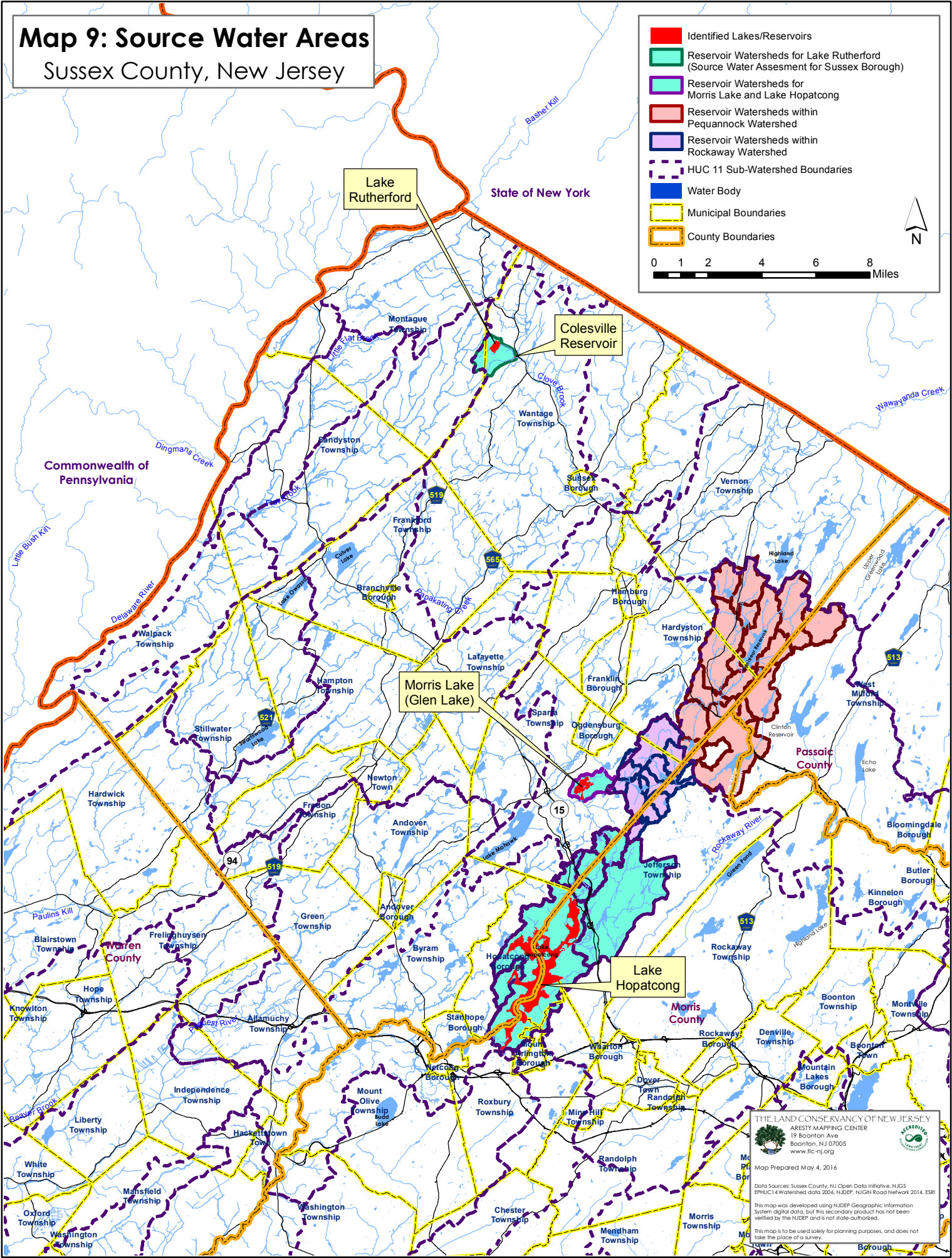
This map is to be used solely for planning purposes, and does not take the place of a survey.

Map 9: Source Water Areas

Sussex County, New Jersey

- Identified Lakes/Reservoirs
- Reservoir Watersheds for Lake Rutherford (Source Water Assessment for Sussex Borough)
- Reservoir Watersheds for Morris Lake and Lake Hopatcong
- Reservoir Watersheds within Pequannock Watershed
- Reservoir Watersheds within Rockaway Watershed
- HUC 11 Sub-Watershed Boundaries
- Water Body
- Municipal Boundaries
- County Boundaries

0 1 2 4 6 8 Miles



THE LAND CONSERVANCY OF NEW JERSEY
 ARESTY MAPPING CENTER
 19 Boonton Ave
 Boonton, NJ 07005
 www.lc-nj.org
 Map Prepared May 4, 2016

Data Sources: Sussex County, NJ Open Data Initiative, NGS EPHUC 14 Watershed data 2006, NJDEP, NJGN Road Network 2014, ESRI


This map was developed using NJDEP Geographic Information System digital data. This secondary product has not been verified by the NJDEP and is not state-authorized.

This map is to be used solely for planning purposes, and does not take the place of a survey.

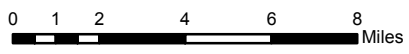
Map 10: Headwaters and Riparian Areas

Sussex County, New Jersey

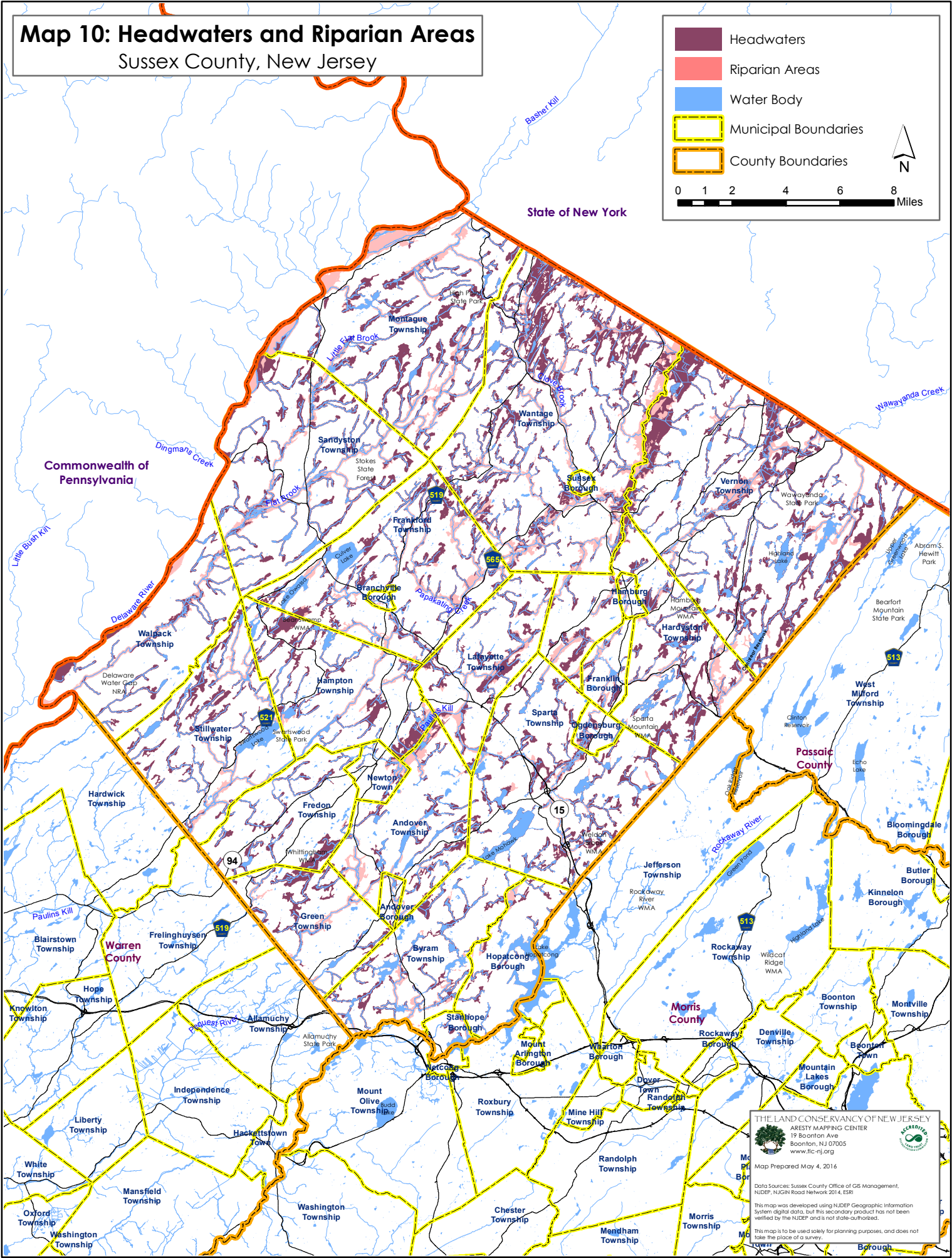
- Headwaters
- Riparian Areas
- Water Body
- Municipal Boundaries
- County Boundaries




N



0 1 2 4 6 8 Miles




THE LAND CONSERVANCY OF NEW JERSEY
 ARESTY MAPPING CENTER
 19 Boonton Ave
 Boonton, NJ 07005
 www.lc-nj.org
 Map Prepared May 4, 2016


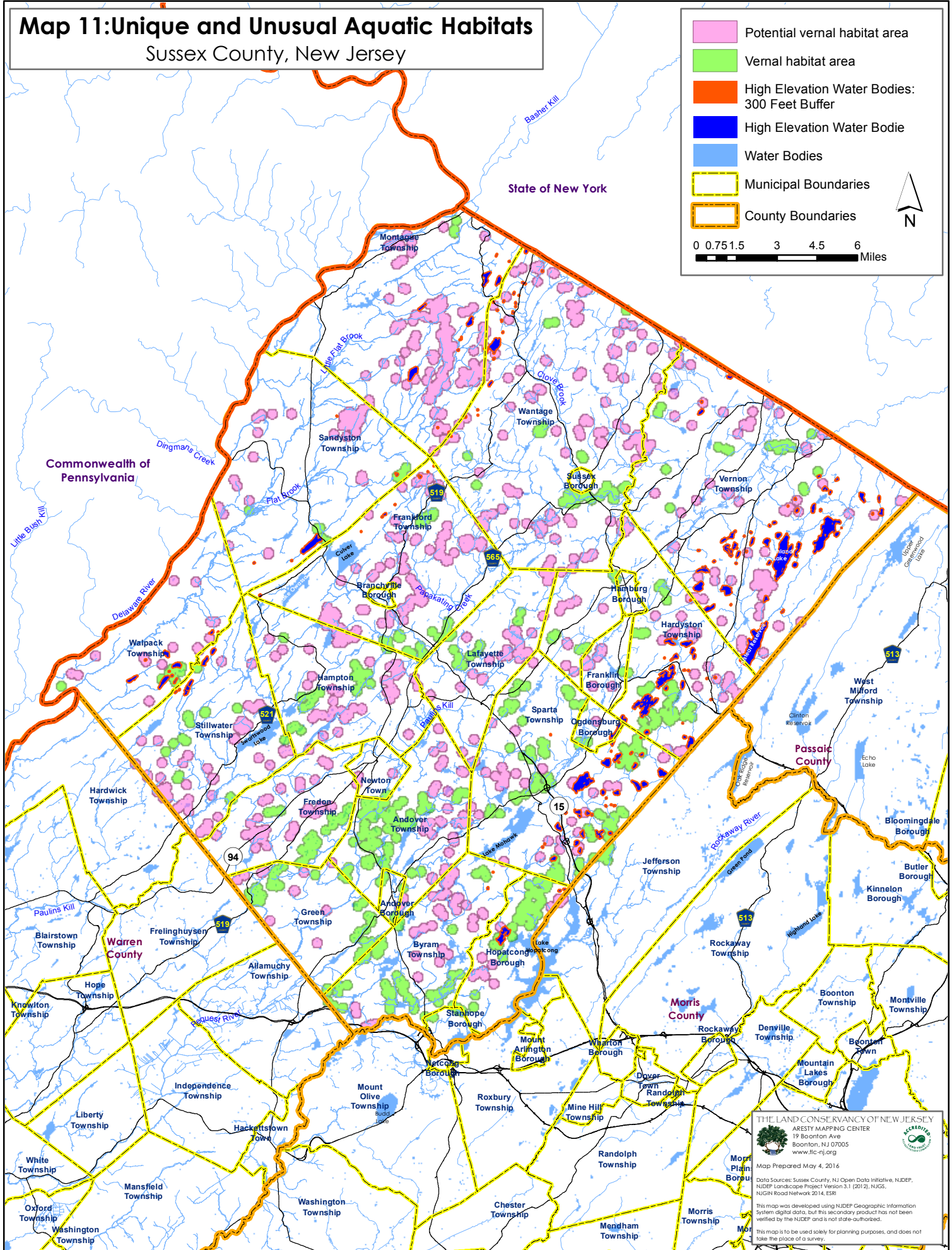
Data Sources: Sussex County Office of GIS Management, NJDEP, NJGRI Road Network 2014, ESRI
 This map was developed using NJDEP Geographic Information System digital data. This secondary product has not been verified by the NJDEP and is not state authorized.
 This map is to be used solely for planning purposes, and does not take the place of a survey.

Map 11: Unique and Unusual Aquatic Habitats

Sussex County, New Jersey

- Potential vernal habitat area
- Vernal habitat area
- High Elevation Water Bodies: 300 Feet Buffer
- High Elevation Water Body
- Water Bodies
- Municipal Boundaries
- County Boundaries

0 0.75 1.5 3 4.5 6 Miles

THE LAND CONSERVANCY OF NEW JERSEY
 ARESTY MAPPING CENTER
 19 Boonton Ave
 Boonton, NJ 07005
 www.lc-nj.org

Map Prepared May 4, 2016

Data Sources: Sussex County, NJ Open Data Initiative, NUDEP, NUDEP Landscape Project Version 3.1 (2012), NJGS, NJGIN Road Network 2014, ESRI

This map was developed using NUDEP Geographic Information System digital data, but this secondary product has not been verified by the NUDEP and is not state-authored.

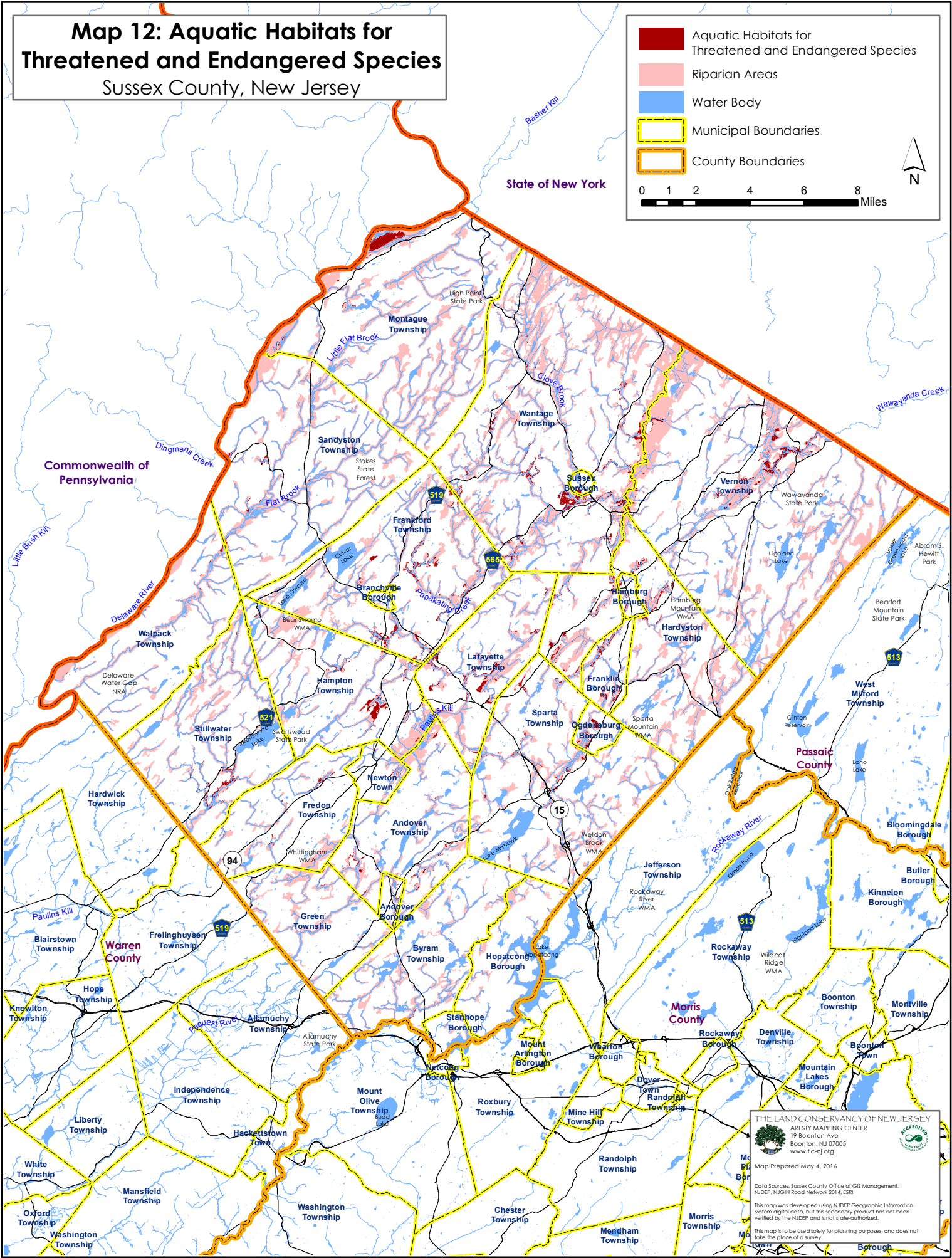
This map is to be used solely for planning purposes, and does not take the place of a survey.

Map 12: Aquatic Habitats for Threatened and Endangered Species

Sussex County, New Jersey

- Aquatic Habitats for Threatened and Endangered Species
- Riparian Areas
- Water Body
- Municipal Boundaries
- County Boundaries

0 1 2 4 6 8 Miles



THE LAND CONSERVANCY OF NEW JERSEY
 RESTY MAPPING CENTER
 19 Boonton Ave
 Boonton, NJ 07005
 www.lc-nj.org

Map Prepared May 4, 2016

Data Sources: Sussex County Office of GIS Management, NJDEP, NJGRI Road Network 2014, ESRI

This map was developed using NJDEP Geographic Information System digital data, but this secondary product has not been verified by the NJDEP and is not state authorized.

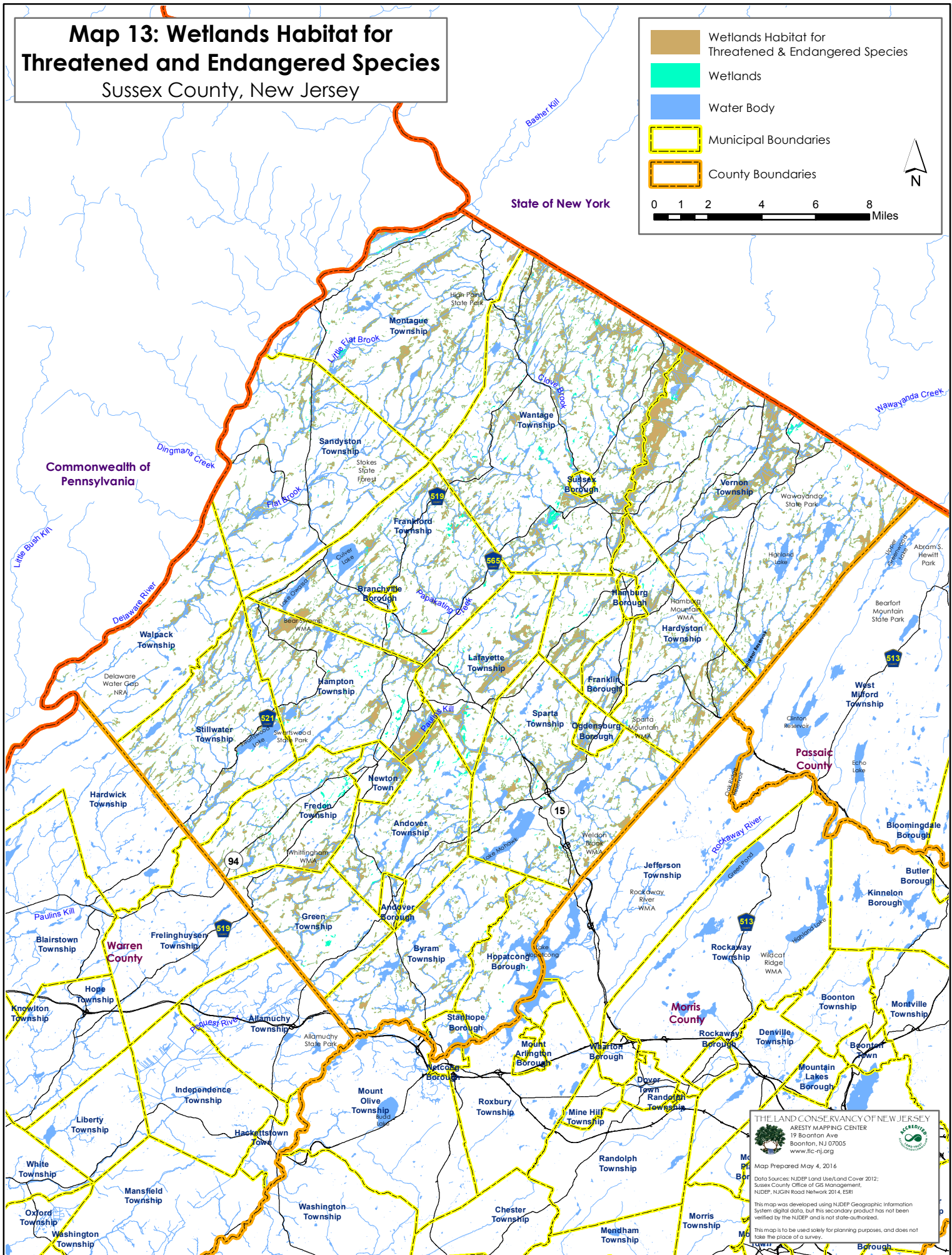
This map is to be used solely for planning purposes, and does not take the place of a survey.

Map 13: Wetlands Habitat for Threatened and Endangered Species

Sussex County, New Jersey

- Wetlands Habitat for Threatened & Endangered Species
- Wetlands
- Water Body
- Municipal Boundaries
- County Boundaries

0 1 2 4 6 8 Miles



THE LAND CONSERVANCY OF NEW JERSEY
 AESTHY MAPPING CENTER
 19 Boonton Ave
 Boonton, NJ 07005
 www.lc-nj.org

Map Prepared May 4, 2016

Data Sources: NJDEP Land Use/Land Cover 2012;
 Sussex County Office of GIS Management,
 NJDEP, NJGN Road Network 2014, ESRI

This map was developed using NJDEP Geographic Information System digital data, but this secondary product has not been verified by the NJDEP and is not state-authorized.

This map is to be used solely for planning purposes, and does not take the place of a survey.